

Dialog-Designer

30 seconds to file management

Rapid Application Development

Development by intuition

Drag and drop to create and edit dialogs

WYSIWYG

(What You See Is What You Get)

Interactive application development

Above standard

Advanced Custom Controls

View the essentials

Syntax-Highlighting and objects browser

Failsafe

Context-sensitive online-help

COM Interface (Component Object Model)

Integration of third party applications.

OLE (Object Linking and Embedding)

Display and process numerous file types

Flexible response

Respond to the events in your application

Protect your investment

Online development of your application



CONZEPT 16 Dialog-Designer

The Dialog-Designer is an integrated component of the CONZEPT 16 developer's tool. With the Dialog-Designer, you can layout your application's user-interface, using standard-, dialog- and MDI-windows (Multiple Document Interface) and defining individual properties such as window title, frame type or menubar. The Dialog-Designer consists of various tools and browsers, enabling you to view and edit the properties of your application's individual elements. All browsers and tools can be turned on and off ad lib, allowing the database developer to adjust the Designer's layout to the progress of his work.

Generate dialogs the fast way

Drag and drop allows you to generate dialogs in no time. Use drag and drop to insert database fields from your object browser into the dialog you are working on. Drag and drop also provides an easy way to incorporate entire records into your dialog. Modifications in a dialog become effective immediately. At any given time, you can switch into evaluation mode to check the proper functioning of your dialogs. In evaluation mode, the developer's interface of the Dialog-Designer is not visible.

Above standard

The Dialog-Designer not only features the standard objects for data input, but also a variety of additional objects to embellish your dialogs. An input control, which is available with most standard objects, allows additional functions such as having a calendar pop up where the input of a date is asked for, or a pocket calculator being displayed where the input of figures is required.

Other objects will create entire record selection lists or provide a toolbar for record management. The Dialog-Designer's RecNavigator already features all the essential record process-

ing functions, allowing you to create a data management system in no time at all. To do so, simply use drag and drop to insert database fields from your browser into an empty window and add a RecNavigator tied to the corresponding file.

Connecting third party applications

Using the COM interface (Component Object Model Architecture) third party software components can be integrated and new functionalities be realized.

An OLE-object can be used to include data from other applications in the dialogs of a CONZEPT 16 database. An OLE-object enables you to display all registered file types such as HTML-pages, Office-documents or pictures in your application.

User-interface and functionality

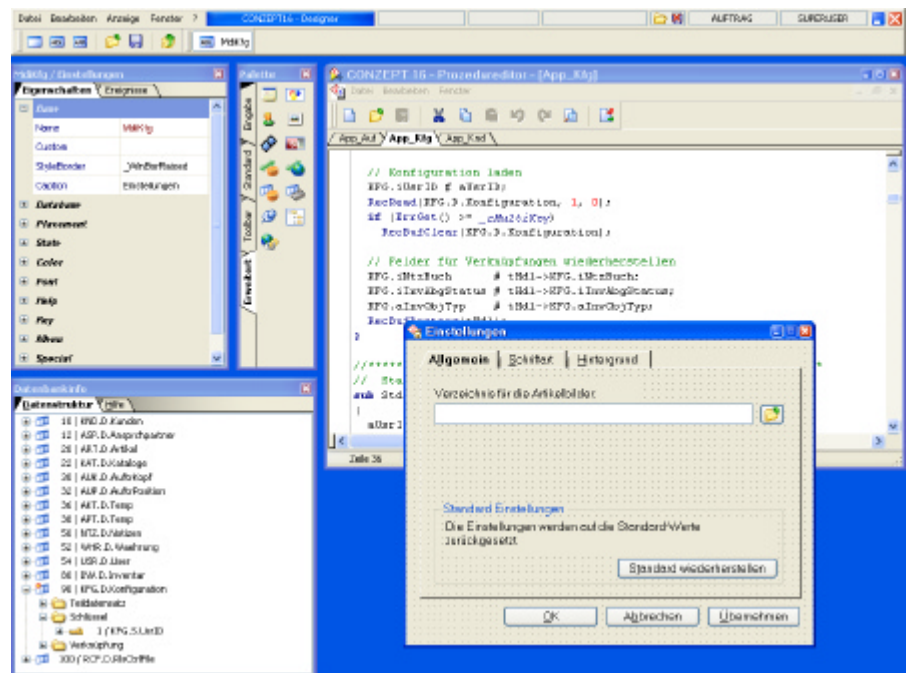
The functionality of your user-interface is established by procedures. The Designer incorporates a special editor for generating and editing procedu-

res. The process of application development is accelerated considerably by the close linking of procedures and dialogs and their evaluation from within the editor. Modifications in procedures can be evaluated immediately. In dialogs, procedures can be tied to a variety of events such as the opening or closing of a dialog.

Editing procedures

Procedures are written in CONZEPT 16's own programming language, which is close to C/C++. Syntax highlighting displays reserved words, commentary and constants in different colors.

The procedure-editor allows you to edit several procedures simultaneously. A multi-level UNDO-function is also available, while source-level debugging will help you to check your procedures for errors. Since a dialog can be driven entirely by procedures, the properties of any object or dialog can be altered dynamically during runtime.



Fast and easy. The tools of the CONZEPT 16 Dialog-Designer. Database developers will enjoy it's speed in generating user-interfaces.

vectorsoft® AG

Seligenstaedter Grund 2
63150 Heusenstamm
Germany

Phone +49 6104 660-100
Fax +49 6104 660-190
E-Mail orga@vectorsoft.de
<http://www.vectorsoft.de>

Loerenstrasse 15
4658 Daeniken
Switzerland

Phone +41 62 28810-22
Fax +41 62 28810-23
E-Mail orga@vectorsoft.ch
<http://www.vectorsoft.ch>

