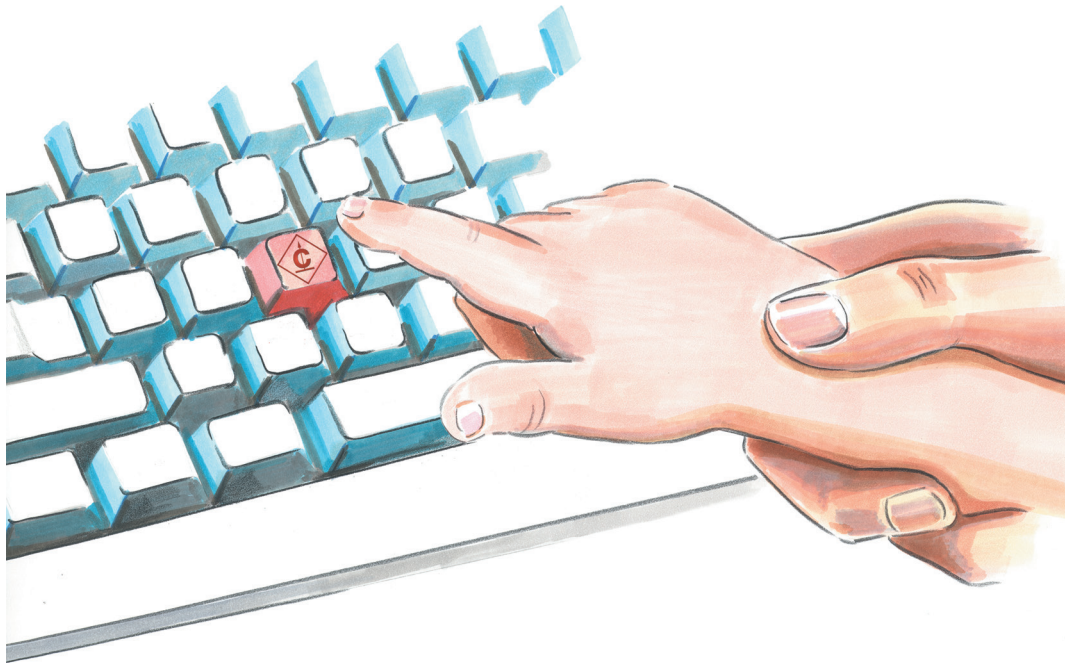


CONZEPT 16[®]

vectorsoft[®] AG

take the right key



for your solutions



drag + drop development

The **CONZEPT 16 designer** is an integral part of the developer environment. It is used to define the user interface and the properties of its individual objects. Drag & drop allows for a quick and intuitive way of creating dialogs. Database fields are dragged from a data window directly into dialogs. If data from other applications is to be included, an OLE-object can be incorporated. The connection between an application's user interface and its underlying functionality is established by procedures which are written in a proprietary CONZEPT 16 programming language resembling C/C++. Procedures can be tried and corrected with the help of the CONZEPT 16 source-level-debugger.

more information www.vectorsoft.de/designer

print processor

The **CONZEPT 16 printer driver** provides an easy way to process procedure-controlled print jobs. You can print from within any application and save your printouts as PDF-documents, for example. Besides PDF-documents, you can also create and print out TIFF-files or preview images in other common graphic formats. Control of the printer driver is assumed by your CONZEPT 16 application, allowing you to integrate print control into your application concept.

more information www.vectorsoft.de/druckertreiber



open connectivity

ODBC is based on the SQL database query language and allows an application to access a variety of data formats. The **CONZEPT 16 ODBC interface** enables other applications supporting ODBC to access CONZEPT 16 databases. Once logged in to the database, applications can use SQL instructions to access its data and generate lists and reports such as serial letters in Word or complex forms in Crystal Reports. On the other hand, ODBC allows a CONZEPT 16 client to gain access to external data through the ODBC driver managers's data resources.

more information www.vectorsoft.de/odbc

Programming interface

The **CONZEPT 16 programming interface** enables application developers to access one or several CONZEPT 16 databases and process the data in their own applications. The interface consists of a Dynamic Link Library (DLL) and runs in client-server mode in connection with a CONZEPT 16 server. It may be used by one or several programs. The possibility to execute procedures via interface considerably facilitates the development of applications. The use of available DLLs and procedures results in a noticeable reduction of programming time and effort.

more information www.vectorsoft.de/dll

Application server

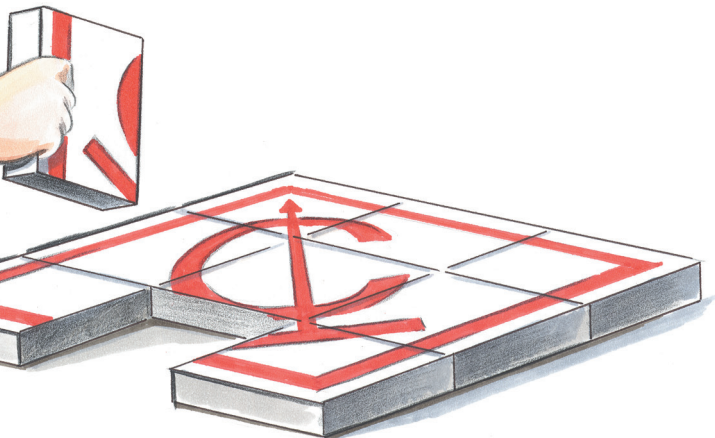
The **CONZEPT 16 server** is designed as a 32/64-bit multithreaded program. The use of procedures allows you to pass client-functions to the server. The server supports closed nested transactions and transaction logging as well as deadlock detection. In addition, it provides database maintenance functions such as diagnosis and analysis, rollback, recover and repair. Further highlights are the high degree of data protection due to the server's exclusive right to access a database, backup without downtime, round the clock availability and employment in heterogenous networks. The server is scalable and platform-independent and provides constant performance even when processing largest amounts of data.

more information www.vectorsoft.de/server

Web integration

The **CONZEPT 16 web interface** consists of a script-processor and a database client. It allows you to use your web-browser to access a CONZEPT 16 database and makes database related applications such as intranet, internet shopping and information services, branch solutions or field service applications available via internet. There are no plug-ins required for your browser. Instructions controlling the interface are integrated in HTML-pages and used to process the returning URL-commands in the CONZEPT 16 programming language. The web interface constitutes an extension of the CONZEPT 16 web server and runs independently from other web languages.

more information www.vectorsoft.de/webdll



CONZEPT 16

Visual database development

Integrated relational database

The CONZEPT 16 application development package includes a relational database. The complete intergration of database and developer environment allows you build frontend- and backend solutions in one single environment. There is no additional product required to establish interconnection between the database and the user frontend.

Platform-independent and open

The design of the developer environment with its own p-code guarantees that applications created with CONZEPT 16 are platform-independent. Additionally, CONZEPT 16 features a series of interfaces to allow external access to a database.

The web-interface redirects queries from web-browsers to a CONZEPT 16 database to have them processed and answered. Database functions are embedded in PHP-scripts via PHP-interface. These interfaces are applied in web-based E-commerce applications or information systems.

The ODBC-interface allows external programs to exchange data with CONZEPT 16 applications and vice versa. Data from Microsoft Excel sheets or other database systems can be easily imported and modified, while access to CONZEPT 16 databases can provide the data required for functions such as serial letters or graphic data output.

Because CONZEPT 16 provides interfaces to native programming languages, it can be integrated into any programming environment, allowing you to combine CONZEPT 16 with other development systems. You can even develop your own drivers to gain access to a database through the CONZEPT 16 server.

Flexible printing

The CONZEPT 16 printer driver enables you to send print jobs from any application to CONZEPT 16. Procedures determine how a printjob is handled. The CONZEPT 16 printer driver prints on paper or to TIFF- or PDF-files. Preview images of a print job in various common image formats can be created as well.

Permanent availability

In today's corporate world, operating processes in a business company rely on a functional electronic data processing system. The centre of such a system may be an enterprise resource planning package or other database driven applications.

Even in case of a short-time database server failure, it is not possible to process orders or to write invoices. If you use a CONZEPT 16 database, however, a Hot-Standby-server provides protection against such a server downtime. The Hot-Standy system consists of two self-sustaining computers, both of which are used as server, each one hosting a copy of the original database. Closed transactions in the primary database are automatically transferred to the secondary database. Both servers may be

configured differently and run under different operating systems. In case the primary server fails, the secondary server automatically assumes all its tasks, allowing users to continue working without interruption. This system also allows you to perform maintenance tasks during normal business hours without affecting normal user activity.

Time is money

Installation and maintenance of database systems can be a time-consuming task for system administrators. CONZEPT 16 proves that it doesn't have to be this way. The entire CONZEPT 16 database system can be installed with little effort. All you have to do is copy the server's program files and create the links for the clients.

Database maintenance is not required either. In case of a failure the administrator is notified automatically and a database diagnosis can be automated as well. Software and application updates are also automatically performed by the CONZEPT 16 server.

Partners on the road to success

The ultimate principle of vectorsoft AG is to provide the best possible support and promotion with the latest technology for our partners. We offer a wide range of support during the varying stages of your software development. From the initial phase of planning to the development of your application, its presentation to potential buyers and customers or when maintaining running systems, vectorsoft will supply personal support for you.

vectorsoft® AG

Seligenstaedter Grund 2
63150 Heusenstamm
Germany

Phone: +49 6104 660-100
Fax: +49 6104 660-190
E-Mail: orga@vectorsoft.de
<http://www.vectorsoft.de>

Loerenstrasse 15
4658 Daeniken
Switzerland

Phone: +41 62 28810-22
Fax: +41 62 28810-23
E-Mail: orga@vectorsoft.ch
<http://www.vectorsoft.ch>

