

Form Designer

Freedom in design

Customized and reusable Print-Form objects

Integration of graphical elements

Use graphics, pictures and barcodes

Create forms by drag and drop

Add objects the easy way

Flexible data access

Select printed data while printing

Optional print preview

Customize preview properties

Print styles without limits

Unlimited number of print styles

Printer control

Programmed adjustment of printer properties

Generate reports without programming

Minimum effort - maximum effect

Report editor

Customizing of reports and forms by user



The CONZEPT 16 Form Designer

The Form Designer is an integrated component of the CONZEPT 16 developer's tool. The Form Designer allows you to create and edit a wide variety of print objects which will serve as basic elements for future printouts. The Form Designer's primary target is to make creating reports and other printouts an easy and quickly accomplished task.

The Form Designer's core element is the PrintDoc-object, which basically determines the page size of a printout. You can define custom print styles in addition to 40 preset print styles.

PrintForm objects

PrintForm objects are used to add data to PrintDoc-objects. The size of a PrintForm object is determined by the user, who can use drag and drop to include text, database fields, pictures, scalable graphics and barcodes. These elements can be positioned anywhere in a PrintForm object and have numerous properties, such as font, color or alignment. All properties can be modified during printing.

The choice and arrangement of PrintForm objects on a single page as well as their distribution across several pages is determined either automatically or by programming. A page may be composed of any number of PrintForm objects. The database contents to be included are determined by procedures during printing.

Special objects

Instead of PrintForm objects, Page objects (page header, page footer and page content) can be used. Page objects make it easy to create letters and single or multiple-page forms.

An advanced PrintDoc object allows you to define multiple-page tables and

reports, including various page headers and page footers, easily and without programming. As all properties of these objects and their elements (number of lines and columns, size of cells etc.) can be adjusted during printing, they allow for a universal usage.

Printing

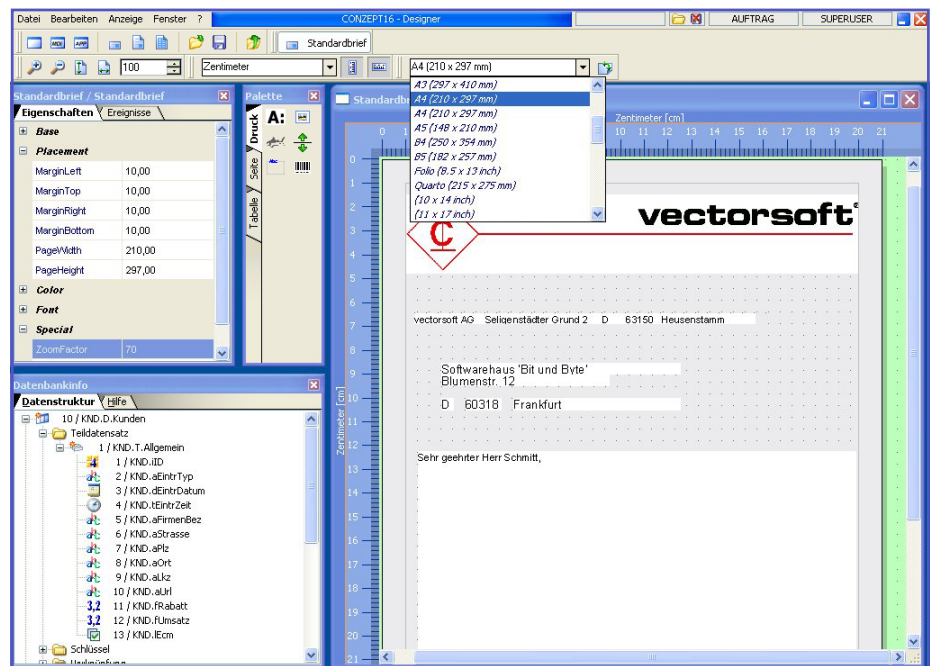
Printing itself is started by a procedure. That way, a maximum of flexibility is guaranteed, allowing the printing of even the most complex documents. First, a print job is opened, the content of which is determined by adding the requested print objects. Once the print job has been completed, it can be pre-viewed, printed or saved as file. The print preview's appearance and functionality can be adjusted individually, and when saving a print job as file, it can be saved as encrypted file. The Form Designer's print preview is capable of processing even print jobs of several thousands of pages.

Printer control

By default, the user selects the printer and the printer settings. However, it is also possible to let the program do the job. In doing so, it is possible to adjust the properties of all printers installed. All printer settings can be modified by procedure during printing as well.

Customizing

By integrating the Form Designer in an application, you can provide the user with a powerful system that allows him to edit and create his own reports and forms. Still, however, it is the program developer who determines the degree to which a user is allowed to edit print objects.



The integrated Form Designer allows you to use drag and drop to easily generate all kinds of printouts from within a CONZEPT 16 application.

vectorsoft® AG

Seligenstaedter Grund 2
63150 Heusenstamm
Germany

Phone: +49 6104 660-100
Fax: +49 6104 660-190
E-Mail: orga@vectorsoft.de
<http://www.vectorsoft.de>

Loerenstrasse 15
4658 Daeniken
Switzerland

Phone: +41 62 28810-22
Fax: +41 62 28810-23
E-Mail: orga@vectorsoft.ch
<http://www.vectorsoft.ch>

